

5MP HDCVI Full-Colour CCTV Kit (1TB)

CODE: CVPLUS-8-4DOME-1TB-G

Individual specifications for the cameras and recorder can be seen on the following pages



What's In The Kit?



Includes 4x 5MP 16:9 Full-Colour Turret Cameras

- Max 25 fps@5MP (16:9 video output).
- 24/7 colour imaging.
- 40 m illumination distance.
- CVI/CVBS/AHD/TVI switchable.
- 2.8 mm fixed lens.
- IP67, 12 VDC.
- Built-in mic (-A).



Includes 1x 5MP AI 8 Channel Compact 1U DVR

- H.265+/H.265 dual-stream video compression
- Supports Full-channel AI-Coding
- Supports HDCVI/AHD/TVI/CVBS/IP video inputs
- Max 12 channels IP camera inputs, each channel up to 6MP; Max 64 Mbps incoming bandwidth
- Up to 1 channel video stream (analog channel) Perimeter Protection
- Up to 8 channels video stream (analog channel) SMD Plus
- Up to 1 channel video stream (analog channel) human face recognition
- IoT & POS functionalities

5MP 16:9 Full-Colour Turret Camera

CODE: EAGLE-5COL-TUR3-FG



* In order to use the 5MP 16:9 HDCVI camera, the firmware of XVR must be upgraded to V4.001.0000001.0.R.200908 or later version.

- Max 25 fps@5MP (16:9 video output).
- 24/7 colour imaging.
- 40 m illumination distance.
- CVI/CVBS/AHD/TVI switchable.
- 2.8 mm fixed lens.
- IP67, 12 VDC.
- Built-in mic (-A).



Function

Full-color

This full-colour camera adopts a large aperture lens and high performance sensor. With a higher amount of absorbed light and advanced image processing algorithms, the camera provides 24/7 colour monitoring with clear and vivid information, significantly increasing the probability of gathering reliable people, vehicle, and event evidence that can be used for further intelligent analysis.

Broadcast-quality Audio

Audio information is used as supplementary evidence in video surveillance applications. This HDCVI camera supports audio signal transmission over a coaxial cable. In addition, it adopts unique audio processing and transmission technology that best restores source audio and eliminates noise, guaranteeing quality and effectiveness of collected audio information.

Warm Supplemental lights

With warm supplemental LED lights, the camera is able to provide a colourful and vivid image even in total darkness. By default, the camera is set to smart light mode, in which the camera can automatically adjust the exposure time and light sensitivity simultaneously to avoid overexposure of the objects in the image center.

4 Signals over 1 Coaxial Cable

HDCVI technology supports 4 signals over 1 coaxial cable simultaneously, i.e. video, audio, data and power. Dual-way data transmission allows the HDCVI camera to interact with the XVR, by sending control signals or triggering alarms. Moreover, HDCVI technology supports PoC for construction flexibility.

Long Distance Transmission

HDCVI technology guarantees real-time transmission at long distances without any loss. It supports up to 700m transmission for 2MP/5MP/8MP HD video via coaxial cable, and up to 300m via UTP cables.

Protection (IP67, wide voltage)

IP67: The camera passes a series of strict tests on dust and soaking. It has dust-proof functionality, and the enclosure works as normal after soaking in 1m deep water for 30 minutes.

Wide voltage: The camera allows $\pm 30\%$ (for some power supplies) input voltage tolerance (wide voltage range), and it is widely applied to outdoor environments with unstable voltage.

5MP 16:9 Full-Colour Turret Camera

CODE: EAGLE-5COL-TUR3-FG



Technical Overview

Camera					
Image Sensor	1/3"4Megapixel progressive CMOS				
Max. Resolution	2688 (H) × 1520 (V)				
ROM	128 MB				
RAM	128 MB				
Scanning System	Progressive				
Electronic Shutter Speed	Auto/Manual 1/3 s–1/100,000 s				
Minimum Illumination	0.004 Lux@F1.0				
S/N Ratio	> 56 dB				
Illumination Distance	30 m (98.4 ft)				
Illuminator On/Off Control	Auto/Manual				
Illuminator Number	2 (Warm light)				
Pan/Tilt/Rotation Range	Pan: 0°–360° Tilt: 0°–78° Rotation: 0°–360°				
Lens					
Lens Type	Fixed-focal				
Mount Type	φ14				
Focal Length	2.8 mm				
Max. Aperture	2.8 mm: F1.0				
Field of View	2.8 mm: 96° (Horizontal) × 51° (Vertical) × 115° (Diagonal)				
Iris Type	Fixed				
Close Focus Distance	2.8 mm: 1.3 m (4.3 ft)				
DORI Distance	Lens	Detect	Observe	Recognize	Identify
	2.8mm	56.0 m (183.7 ft)	22.4 m (73.5 ft)	11.2 m (36.7 ft)	5.6 m (17.1 ft)
Smart event					
General IVS Analytics	Tripwire; intrusion				
Video					
Video Compression	H.265; H.264; H.264B; MJPEG (only supported by the sub stream)				
Smart Codec	Smart H.265+/ Smart H.264+				
Video Frame Rate	Main stream: 2688 × 1520 (1 fps–25/30 fps) 2560 × 1440 (1 fps–25/30 fps) Sub stream: 704 × 576 (1 fps–20/25 fps) 704 × 480 (1 fps–20/30 fps)				
Stream Capability	2 streams				
Smart Illumination	Yes				
Digital Zoom	No				

Resolution	2688 × 1520 (2688 × 1520); 2560 × 1440 (2560 × 1440); 2304 × 1296 (2304 × 1296); 1080p (1920 × 1080); 1.3M (1280 × 960); 720p (1280 × 720); D1 (704 × 576/704 × 480); VGA (640 × 480); CIF (352 × 288/352 × 240)
Bit Rate Control	CBR/VBR
Video Bit Rate	H.264: 32 kbps–6144 kbps H.265: 12 kbps–6144 kbps
Day/Night	Colour/B/W
BLC	Yes
HLC	Yes
WDR	120 dB
White Balance	Auto/natural/street lamp/outdoor/manual/regional custom
Gain Control	Auto/Manual
Noise Reduction	3D DNR
Motion Detection	OFF/ON (4 areas, rectangular)
Region of Interest(Rol)	Yes (4 areas)
Smart Illumination	Yes
Image Rotation	0°/90°/180°/270° (Support 90°/270° with 2688×1520 resolution and lower.)
Mirror	Yes
Privacy Masking	4 areas
Audio	
Built-in MIC	Yes
Audio Compression	G.711A; G.711Mu; G.726; AAC
Alarm	
Alarm Event	No SD card; SD card full; SD card error; network disconnection; IP conflict; motion detection; video tampering; tripwire; intrusion; illegal access; voltage detection; audio detection; safety exception
Network	
Network	RJ-45 (10/100 Base-T)
SDK and API	Yes
Protocol	HTTP; TCP; ARP; RTSP; RTP; UDP; RTCP; SMTP; FTP; DHCP; DNS; DDNS; PPPoE; IPv4/v6; QoS; UPnP; NTP; RTMP; Multicast; HTTPS; SFTP; 802.1x; ICMP; IGMP; Bonjour
Interoperability	ONVIF (Profile S/Profile G/Profile T); CGI; P2P; Milestone; Genetec
User/Host	20 (Total bandwidth: 72 M.)
Storage	Dahua Cloud; FTP; Micro SD card (support max. 256 G); NAS; SFTP
Browser	IE Chrome Firefox
Management Software	Smart PSS; DSS; DMSS
Mobile Phone	IOS; Android

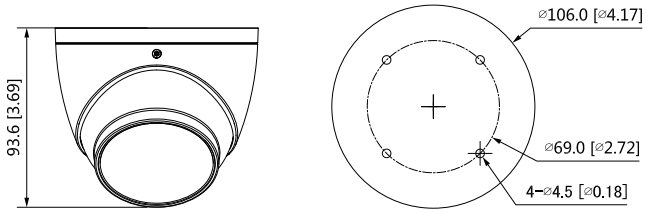
5MP 16:9 Full-Colour Turret Camera

CODE: EAGLE-5COL-TUR3-FG

HD
ANALOGUE



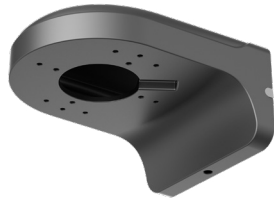
Dimensions (mm/inch)



Accessories



RING-J1-G
Water-Proof
Junction Box



WALL-BK-W2-G
Wall Mount
Bracket



5MP AI 8 Channel Compact 1U DVR

CODE: EAG-5MP-PRO-AI3-8-1TB



- H.265+/H.265 dual-stream video compression
- Supports Full-channel AI-Coding
- Supports HDCVI/AHD/TVI/CVBS/IP video inputs
- Max 12 channels IP camera inputs, each channel up to 6MP; Max 64 Mbps incoming bandwidth
- Up to 1 channel video stream (analog channel) Perimeter Protection
- Up to 8 channels video stream (analog channel) SMD Plus
- Up to 1 channel video stream (analog channel) human face recognition
- IoT & POS functionalities



Function

Real Time Face Recognition

Video stream real time face recognition. Facial attribute analysis features include gender, age, expression, glasses, moustache, mouth, mask etc. It helps to identify people and also capture & record faces with metadata. Supports facial feature filtering while in real time display mode.

*Face Recognition takes effect when Face is selected in AI Mode.

Perimeter Protection

Automatically filters out false alarms caused by animals, rustling leaves, bright lights, etc. Enables system to act as secondary recognition for the targets. This improves alarm accuracy.

*Perimeter Protection takes effect when IVS&SMD is selected in AI Mode.

SMD Plus

SMD Plus, referred to as Smart Motion Detection Plus, is an upgraded version of SMD that greatly improves the alarm accuracy by loading deep-learning algorithms. It analyzes people and vehicles based on motion detection and sends alarms only when intrusion is detected.

*SMD Plus takes effect when SMD or IVS&SMD is selected in AI Mode.

AI Coding

Compared with H.265, AI codec can reduce up to 50% of the bit rate and storage requirements while have no loss of decoding compatibility, providing clear people and vehicle details.

Smart H.265+

Smart Codec, H.265+ can reduce up to 90% bit rate and storage requirements compared with H.264 without having to invest in new cameras.

HDCVI/AHD/TVI/CVBS Auto-detect

The XVR can auto recognize the signal of front-camera without any setting. It makes operation more friendly and convenient.

High Definition Camera Input

The XVR supports up to 5MP HDCVI camera and 6MP IP camera input.

Coaxial Audio/Upgrade/Alarm

The integrated design can reduce wiring troubles which makes it much more cost-effective and convenient for installation.

Long Distance Transmission

The HDCVI system supports long distance transmission over coaxial cable and UTP, max. 700 m for 4K/4MP, 800 m for 1080p and 1200 m for 720p.

AI Search

Extract and classify person and vehicles from massive video data, easy for end users to trace historical information and analyze. Person & Vehicle optional for playback to achieve quick target search, saving event retrieval time.

5MP AI 8 Channel Compact 1U DVR

CODE: EAG-5MP-PRO-AI3-8-1TB

HD
ANALOGUE



Technical Overview

System	
Main Processor	Industrial-grade embedded processor
Operating System	Embedded Linux
Operation Interface	Web/operating in local GUI
Video	
Access Channel	8 channels
Network Bandwidth	200 Mbps for access, 200 Mbps for storage and 100 Mbps for forwarding.
Resolution	12M/8M/5M/4M/3M/2M/720P/D1
Decoding Capability	1ch 8MP@30fps 4ch 1080P@30fps
Video Output	1 VGA/1 HDMI simultaneous video output by default, the maximum resolution of HDMI is 4K
Multi-screen Display	1/4/8/9
Third Party Camera Access	Onvif, RTSP
Compression	
Video	H.264/.H265/Smart H.264+/Smart H.265+/MJPEG
Audio	PCM/G711A/G711U/G26/AAC
Network	
Network Protocol	HTTP, HTTPS, TCP/IP, IPv4, IPv6, RTSP, UDP, NTP, DHCP, DNS
Mobile Phone Access	Android, iOS
Interoperability	ONVIF (profile T/profile S/profile G), CGI, SDK
Browser	Chrome, IE9 or above, Firefox
Record Playback	
Multi-channel Playback	Up to 8 channels playback
Record Mode	Priority of record mode: Manual recording > alarm recording > motion detection recording > timed recording
Storage	Local HDD and network
Backup	USB device
Playback Function	1. Play, pause, stop, fast forward, fast backward, rewind, play by frame 2. Full screen, backup (cut/file), partially enlarge, audio on/off
SMD Plus	
Performance	4 channels
AI Search	Search by target classification (Human, Vehicle)
Face Recognition	
Performance	Max 8 face pictures/sec processing 1 channel video stream face recognition
Stranger Mode	Detect strangers' faces (not in device's face database). Similarity threshold can be set manually.
AI Search	Up to 8 target face images search at same time, similarity threshold can be set for each target face image.

Database Management	Up to 10 face databases with 5,000 face images in total. Name, gender, birthday, address, certificate type, certificate No., countries®ions and state can be added to each face picture.
Database Application	Each database can be applied to video channels independently.
Trigger Events	Buzzer, Voice Prompts, Email, Snapshot, Recording, Alarm Out, PTZ Activation, etc.
Alarm Linkage	Video recording, snapshot, log, preset, tour
Perimeter Protection	
Performance	2 channels
Object classification	Human/Vehicle secondary recognition for tripwire and intrusion
AI Search	Search by target classification (Human, Vehicle)
Alarm	
General Alarm	Motion detection, privacy masking, video loss, PIR alarm, IPC alarm
Anomaly Alarm	Front-end device going offline, storage error, full storage, IP conflict, MAC conflict, login lock, network security anomaly
Alarm Linkage	Video recording, snapshot, log, preset, tour
External Port	
HDD	1 SATA port, up to 8 TB. The maximum HDD capacity varies with environment temperature
USB	1 front USB 2.0 port, 1 rear USB 2.0 port
HDMI	1
VGA	1
Network	1 RJ-45 port (10/100/1000 Mbps), 8 RJ-45 ports with PoE power supply (10/100 Mbps)
RCA Input	1
RCA Output	1
General Parameter	
Power Supply	DC53V, 1.8A
Power Consumption	Total output of NVR is ≤ 10W (without HDD) Total output power of PoE is 72W, the maximum output power of a single port is 25.5W
Net Weight	0.86 kg (2.03 lb)
Gross weight	2.07 kg (4.56 lb)
Product Dimensions	260mm × 232.7mm × 47.6mm (W × L × H) 10.24 inch × 9.16 inch × 8.77 inch (W × L × H)
Package Dimensions	117 mm × 373 mm × 307 mm (W × L × H) 4.61 inch × 14.69 inch × 12.09 inch (W × L × H)
Operating Temperature	-10°C to 55°C (+14°F to +113°F)
Storage Temperature	0°C to 40°C (+32°F to +104°F)
Operating Humidity	10%–93%
Storage Humidity	30%–85%
Operating Altitude	3000 m (9843 ft)
Installation	Desktop mounting
Certifications	CE/FCC

5MP AI 8 Channel Compact 1U DVR

CODE: EAG-5MP-PRO-AI3-8-1TB



Construction

Dimensions	Compact 1U, 260.0 mm × 237.9 mm × 47.6 mm (10.24" × 9.37" × 1.87")
Net Weight (without HDD)	1.19 kg (2.62 lb)
Gross Weight	1.639 kg (3.61 lb)
Installation	Desktop installation

Environmental

Operating Conditions	-10°C to +55°C (+14°F to +131°F), 0%–90% (RH)
Storage Conditions	-20°C to +70°C (-4°F to +158°F), 0%–90% (RH)

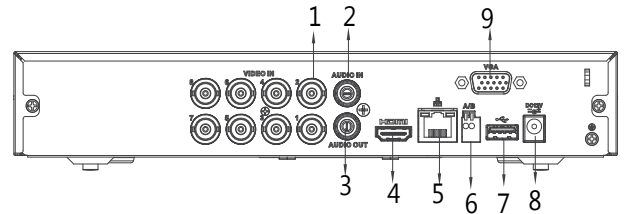
Third-party Support

Third-party Support	Dahua, Arecont Vision, AXIS, Bosch, Brickcom, Canon, CP Plus, Dynacolor, Honeywell, Panasonic, Pelco, Samsung, Sanyo, Sony, Videotec, Vivotek, and more
---------------------	---

Certifications

	FCC: Part 15 Subpart B
--	------------------------

Panels



- | | | | |
|---|--------------------------|---|--------------------|
| 1 | VIDEO IN | 6 | RS485 Interface |
| 2 | AUDIO IN, RCA Connector | 7 | USB Interface |
| 3 | AUDIO OUT, RCA Connector | 8 | DC 12V Power Input |
| 4 | HDMI Interface | 9 | VGA Interface |
| 5 | Network Interface | | |

Dimensions (mm/inch)

